



THREE/ONE COLORWORK COWL mYak Medium Version

This rhythmic two-color motif alternates three stitches of one shade with one stitch of another for a delightful, diagonal, criss-crossing diamond pattern.

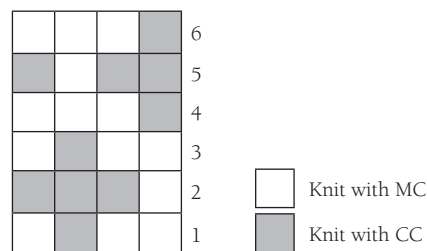
- Finished Size:** Approx. 24"/61cm around x 11"/28cm deep, after blocking.
- Yarn:** 3 skeins mYak Medium (125 yds/117m each); 2 skeins of Main Color (MC) and 1 skein of Contrast Color (CC). Or approx. 165 yds/150m in MC and 107 yds/98m in CC of an equivalent worsted-weight yarn.
- Needles & Notions:** US 8 (5mm) 16"/40cm circular needle, or size to obtain gauge.
US 6 (4mm) 16"/40cm circular needle, or two sizes smaller than gauge needle.
1 stitch marker. Darning needle to finish.
- Gauge:** Approx. 20 sts/24 rounds = 4"/10cm in colorwork stitch in the round, after blocking.
- Glossary:** CC = contrast color; K = knit; MC = main color; P = purl; RS = right side; St(s) = stitch(es).

Cast on: With smaller needle and MC, using cable cast-on technique, cast on 120 sts. Do not join in the round yet.

First edging: Row 1 (RS): *K1, P1*; repeat between * * to end. Do not turn. Join in the round, being careful not to twist. Place marker to designate beginning of round; on subsequent rounds, slip marker as you come to it.
Continue working in K1/P1 ribbing for 3 more rounds.

Colorwork sequence: Change to gauge needle and knit one round.
Join CC and work Rounds 1–6 of Three/One Colorwork chart nine times. Then, repeat Rounds 1–3 one more time. [57 rounds total]
Break CC yarn, leaving 8"/20cm tail to weave in later.
Continuing with MC, knit one round.

Three/One Colorwork Chart



4-st repeat; read chart from right to left every round.

Second edging: Change to smaller needle and work K1/P1 ribbing for 4 rounds.

Bind off: Bind off in pattern, matching tension of cast-on edge as closely as possible. Weave in ends as invisibly as possible on wrong side.

Finishing: Soak piece for 20 minutes in tepid water with a little no-rinse wool soap. Gently squeeze out as much water as possible. Roll in towel to squeeze out more moisture. Lay cowl on moisture-safe surface, gently pulling to desired dimensions. Allow to dry completely.

© 2021 Churchmouse Yarns & Teas

{{{Name of Pattern}}} continued...