



COLORWORK SLOUCH HAT & COWL

Wool and the Gang Alpachino Merino

A chunky-weight yarn in two colors makes this graphic, colorwork motif pop! Both hat and cowl are super quick to knit. Best of all, by switching up the main color and contrasting color, you can knit a matching set in just two skeins of yarn!

Finished Sizes: *Hat:* Approx. 20"/51cm around x 10"/25.5cm deep, to fit 21–22"/53.5–56" head.
Cowl: Approx. 24"/XXcm around x 8"/20cm deep.

Yarn: 2 skeins Wool and the Gang Alpachino Merino (110 yds/100m each): 1 each in Main Color (MC) and Contrast Color (CC).
Or approx. 110 yds/100m each in two colors of an equivalent chunky-weight yarn. *Note:* This is enough to complete a hat and cowl in opposite colorways.

Needles & Notions: US 11 (8mm) 16"/40cm circular and double point-needles, or size to obtain gauge.
US 9 (5.5mm) 16"/40cm circular needle, or two sizes smaller than gauge needle.
5 markers, one in contrast color for start of round. Darning needle to finish.
Optional: 3¾"/85mm pom-pom maker.

Gauge: Approx. 12 sts/14 rows = 4"/10cm in colorwork stitch in the round, after blocking.

Glossary: **K** = knit; **K2Tog** = knit 2 stitches together; **P** = purl; **St(s)** = stitch(es).

SLOUCH HAT

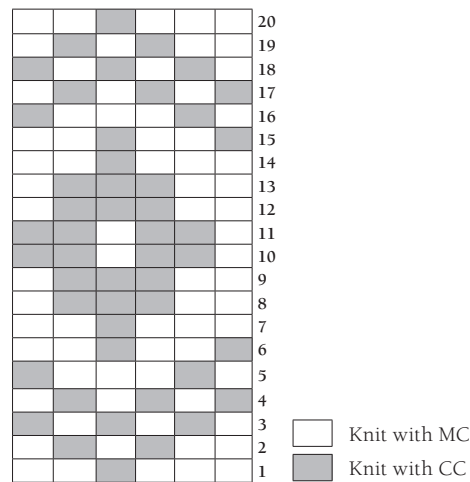
Cast on: With smaller needle and MC, using long-tail cast-on method, cast on 60 sts. Place contrasting color marker and join in round, being careful not to twist. On subsequent rounds, slip marker as you come to it.

Ribbing: Round 1: *K1, P1*; repeat from * * to end.
Repeat Round 1 until piece measures 1"/2.5cm from cast-on edge.

Body: Change to gauge needle and knit one round.
Join CC and work the 20-round Colorwork Chart at right (reading from right to left), repeating each 6-stitch sequence 10 times around.

Cut CC yarn. With MC only, knit one round, placing four more markers every 12 sts.

Colorwork Chart



6-st repeat; read chart from right to left every round.

Continued on next page...

Decrease rounds: Round 1: *Knit to 2 sts before marker, K2Tog*; repeat between * * to end. [5 sts decreased]

Round 2: Knit.

Repeat Round 1 only (decreasing every round) until 10 sts remain. *Note: Change to double-point needles when necessary.*

Finishing: Break yarn, leaving 8"/20cm tail. With darning needle, thread tail through all 10 sts and draw up tightly; repeat for strength. Weave in ends as invisibly as possible on wrong side.

Blocking: Soak for 20 minutes in tepid water with no-rinse wool soap. Gently squeeze out as much water as possible. Roll up in towel and squeeze again. Lay flat to dry, allowing crown shaping to cup naturally. Allow to dry completely. Steam press using press cloth to smooth out any fold lines.

Optional pompom: Make pompom using leftover or contrasting yarn following instructions on pompom maker. Leave long tails on pompom to sew onto beanie.

With darning needle, pass tails of pompom a small distance apart to inside of beanie; tie together in a tight bow so you can easily remove pompom for washing.

COWL

Cast-on: With smaller needle and CC, using long-tail cast-on method, cast on 72 sts. Place marker and join in round, being careful not to twist. On subsequent rounds, slip marker as you come to it.

First edging: Round 1: *K1, P1*; repeat from * * to end.
Repeat Round 1 until piece measures 1"/2.5cm from cast-on edge.

Body: Change to gauge needle and knit one round.
Join MC and work the 20-round Fair Isle chart, page 1 (reading from right to left), repeating each 6-stitch sequence 12 times around.
Cut MC yarn. With CC only, knit one round.

Second edging: Change to smaller needle and with CC only, work K1/P1 edging for 1"/2.5cm.

Finishing: Bind off in pattern, matching tension of cast-on edge as closely as possible. Weave in ends as invisibly as possible on wrong side.

Blocking: Block as for hat (above).