



SNOWFLAKE CHART

We charted and adapted a traditional Scandinavian snowflake pattern from a child's vintage sweater. These snowflakes are a charming way to make existing knits more festive. Sprinkle knitted or duplicate-stitched snowflakes liberally around for an instant flurry!

If you choose to duplicate stitch the design, you can always remove them for the spring thaw.

Where to use colorwork charts:

We've used charts on our Churchmouse At Home and Classics patterns, such as our 'Hot Water Bottle Cozy,' 'Basic Christmas Stockings,' 'Turkish Bed Socks,' 'Colorwork Cuffs and Mittens,' and tea cozies. Other ideas for motif placement include stockinette-stitch areas on scarves and cowls, sock cuffs, and hats.

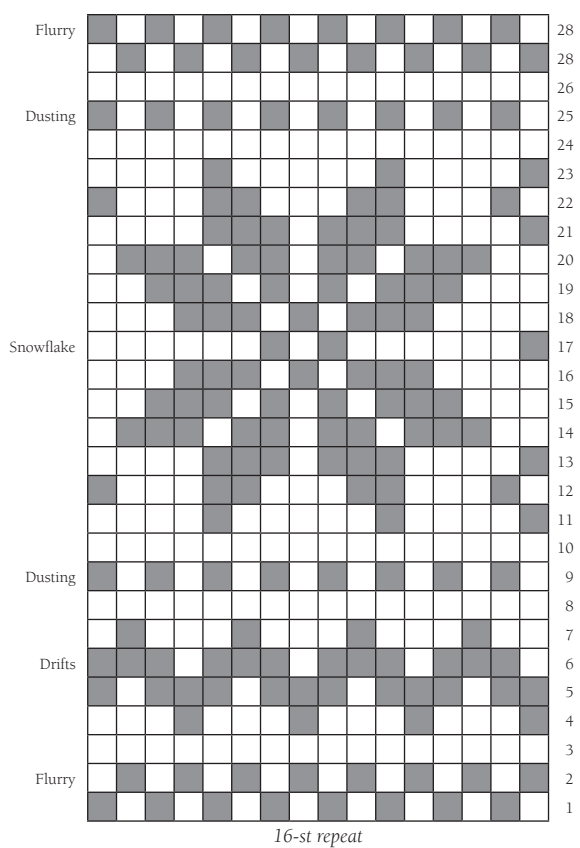
How to use colorwork charts:

You can use the whole chart or just parts of a chart. You can add one solo motif or repeat the motif. You can create an all-over pattern or create a border. While we've used shaded boxes for the motif stitches and white boxes for the background, remember that you can also use a dark background and a light motif yarn.

We prefer knitting in the round when using charts, so our chart rows are always numbered up the right side. If your project is knit flat, read Row 1 (and all subsequent right-side, odd-numbered rows) from the right; read all even-numbered, wrong-side rows from the left.

If you are working the chart as stranded colorwork, be sure to keep your floats nice and loose across the back. When inserting a band of colorwork into an otherwise plain piece, we often use a needle one size larger than our gauge needle.

Once chart rows are complete, remember to change back to smaller needles. Blocking will help even up your stitches.



□ Knit with MC ■ Knit with CC

Working with this Snowflake chart:

The circumference or width of your project needs to be a multiple of 16 stitches to work this chart. If it's not, you can increase or decrease approximately 1/2-1" worth of stitches (total number of stitches will depend on your gauge) evenly spaced to tweak your stitch count just before you begin charted rounds. If more adjustment than this is required, you may want to choose a different chart.

Our rows of 'flurries,' 'dustings' and 'drifts' are asymmetrically placed above and below the snowflake; you can add or subtract more rows of any of them as you like.

Placing this chart in our 'Hot Water Bottle Cozy' pattern:

Follow our pattern and work as written until body section measures 4". On the last round, change to needles one size larger than gauge needles and decrease 4 stitches evenly spaced. Knit 3 and place a temporary marker for chart rounds (this will center the snowflake on the front). Work chart Rounds 1-28, working the 16-stitch repeat five times. Change back to smaller needles and MC; increase 4 stitches evenly spaced; revert to original marker and complete as written.

© 2014 Churchmouse Yarns & Teas